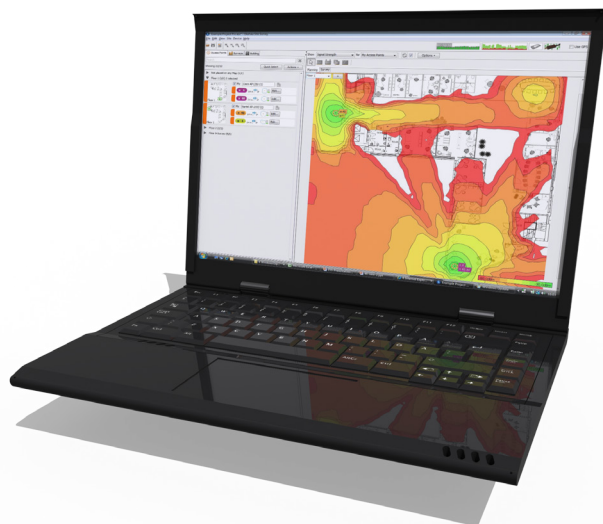


Ekahau Site Survey

Wi-Fi Planning, Verification, Troubleshooting

For IT managers, administrators and wireless professionals, Ekahau Site Survey (ESS) is an easy-to-use design, verification and troubleshooting tool for any 802.11a/b/g/n Wi-Fi network. ESS is a visual, software-based tool that runs on a laptop computer equipped with a supported Wi-Fi adapter.



Ekahau Site Survey ensures high performance for any Wi-Fi network that is used for VoIP, video, location tracking, or high-speed data. If you don't have the network yet, ESS will automatically tell you the optimal access point locations and configurations. If you already have the network in place, ESS allows quick and easy site surveys, analysis, optimization, and troubleshooting.

Auto-Planner Creates the Optimal Wi-Fi Network in 3D

ESS automatically creates a multi-floor Wi-Fi network plan for you, based on your requirements. Within seconds, ESS will tell you the optimal number of access points, the best locations for the APs, and performance-maximizing channel plan. You will also see how the Wi-Fi network will perform before going on-site. The 3D planning uses signal leakage between floors to your benefit while minimizing the inter-floor channel interference.

Hybrid Site Surveys: Verify Coverage and Performance

ESS is the only tool with Hybrid Survey technology: During a single, quick walk-through, ESS makes passive and active tests. In other words, ESS simultaneously measures and maps Wi-Fi airspace as well as end-to-end connectivity. This means getting more on-site work done in a shorter time. During the survey, ESS also discovers all the audible access points and automatically locates them.

Analyze and Report

ESS makes in-depth network analysis easy with accurate, color-coded heat maps. Signal strength, data rate, packet loss, roaming, overlap, and various other characteristics are available.

When it comes to Wi-Fi, each network has its own particular requirements. ESS includes pre-defined requirements to optimize for VoIP, video, web browsing and location tracking.

All of the findings, including access point and site information, can be automatically compiled into comprehensive reports.

*=Available in Ekahau Site Survey Professional Edition

** = Spectrum Analyzer sold separately

Features

Network Planning

- 802.11abgn 3D Planning*
- Automated AP Placement
- Visualize simulated coverage / performance*
- Hundreds of 3D antennas
- Expansion planning*

Site Surveys

- Hybrid .11abgn Survey:
Simultaneous passive and active surveys
- GPS outdoor surveys*

Analysis / Reports

- Clear Visualizations:
 - Signal Strength, SNR
 - Noise / Interference
 - Data Rate, Overlap
 - Roaming, Packet Loss
 - Round-Trip Time
- Locate access points
- Spectrum Analysis**
- Customizable reports*

Troubleshooting

- On-the-spot + Map-based
- Find Wi-Fi issues:
 - Rogue APs, Broken APs
 - Misconfigured SSIDs
 - Missing security configs
 - Packet loss, high latency
 - Excessive interference

RTLS Deployment

- RTLS calibration
- Accuracy analysis
- Track laptop or Wi-Fi tag

Optimize, Troubleshoot, Simulate

Many network problems can't be detected even by the smartest of Wi-Fi controllers. With ESS you will spot these unseen problems: Fix broken or misconfigured access points, find undetected rogue access points, detect missing SSIDs and security settings, identify and minimize signal leakage, and discover coverage holes. Advanced simulation capabilities allow you to create what-if-scenarios, such as moving or replacing access points, increasing network load, or using different network adapters.

ESS provides two main methods for troubleshooting: On-the-spot troubleshooting, where the network is tested and analyzed in real time, and post-survey troubleshooting, where ESS shows on a map, what problems were detected and where. Both take advantage of the Hybrid Survey technology.

The optional DBx Spectrum Analyzer allows you to detect and analyze the impact of non-Wi-Fi interference sources. These include microwave ovens, cordless phones, wireless video cameras and motion detectors.

Full Integration with Ekahau RTLS

Your Wi-Fi network can also be used to accurately track assets and people using the real time location system (RTLS) from Ekahau (sold separately). ESS fully integrates with Ekahau RTLS to minimize deployment time and cost. The site survey data is used to calibrate the location system - no separate calibration is needed.

The Bottom Line

Whether you already have a Wi-Fi network or are about to build one, with Ekahau Site Survey, you will quickly be on your way to Wi-Fi that truly works. By choosing ESS, you're not alone: 10,000 customers, including virtually all Wi-Fi infrastructure vendors, are using ESS.

More information, videos, images, and a free trial version available at:

www.ekahau.com/ess

Recommended Extras

DBx Spectrum Analyzer



NIC-300 Survey Adapter

System Requirements

OS: Windows XP, Vista, 7 (32bit)

Processor: 1.2GHz or faster

RAM: 1GB (2GB recommended)

Wi-Fi adapter: Ekahau NIC-300 recommended. Complete list at www.ekahau.com/devices

Floor plan of the facility

- Vector/CAD (DWG/DXF/SVG)
- Bitmap (bmp/gif/jpeg/png)



www.ekahau.com

USA

West Coast

12930 Saratoga
Avenue, Suite B-8
Saratoga, CA 95070
Tel: 1-866-4EKAHAU
Fax: 1-703-860 2028
sales-americas@ekahau.com

East Coast

1851 Alexander Bell Drive
Suite 300
Reston, VA 20191
Tel: 1-866-4EKAHAU
Fax: 1-703-860 2028
sales-americas@ekahau.com

EUROPE

Hiilikatu 3
00180 Helsinki, Finland
Tel: +358-20-743 5910
Fax: +358-20-743 5919
sales-europe@ekahau.com

ASIA

25/F., Queen's Road Centre
152 Queen's Road Central
Hong Kong
Tel: +852-3426 4770
Fax: +852-3426 4061
sales-asia@ekahau.com