

LANEXPERT™ 85

Fiber and Copper Inline Network Analyzer!

NEW
Dual Media
Tester



The LanExpert 85 network analyzer provides expert assistance for all tiers of LAN installers, technicians and managers working with either copper or fiber media. An extensive suite of test capabilities include: Link Detection, Ping and Trace Route to verify network connectivity; Single Ended or Inline Packet Monitoring, Filtering and Capture to identify and solve complex problems; User defined Traffic Generation and structured RFC 2544 Stress Test to predict network performance under varying load conditions; Loopback, VoIP and Email tests to ensure proper performance of key network services. The LanExpert is a single solution for network professionals to quickly maintain and optimize networks from the fiber or cable to the packet.

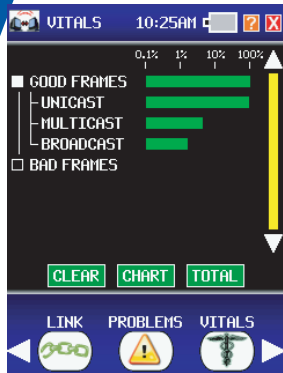
- Measure Rx and Tx Optical Power
- Identify Traffic Protocols by Amount and Percentage.
- Capture Up to 10,000 Packets for Analysis or Download to a PC.
- Comprehensive Data Filtering to Quickly Identify Problems.
- Qualify Network Segments with an RFC 2544 Stress Test Prior to Activating.
- Process VoIP Traffic to Determine Call Statistics and Quality.
- IPv6 Detection Capabilities
- One or Two Port Traffic Generation with Selectable Frame Size and Bandwidth Percentage.
- Automatically Identify Standard Link, Frame, and Traffic Problems.
- Identify Connected Network Devices by Type, IP Address or MAC Address.
- Single or Dual Port Loopback Test Capability.
- Inline Packet Inspection.

Expert help for your Network



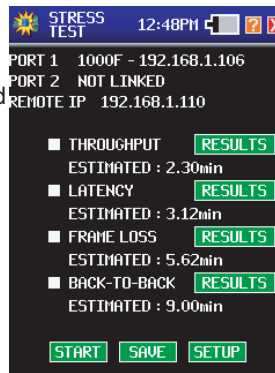
Screen Displays

The LanExpert is a comprehensive network analyzer that allows users to deliver reliable network services with a single test device. LAN installers, technicians, managers and service providers can now get expert network help at an affordable price.



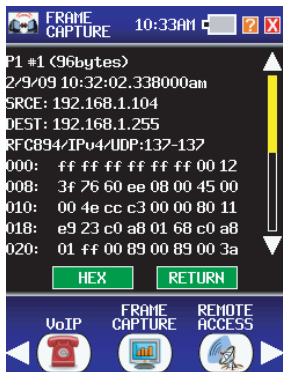
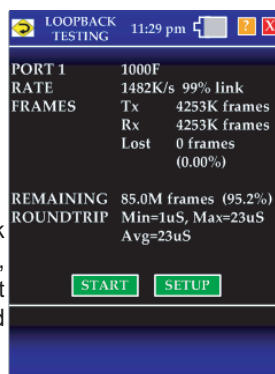
Vitals provides an indication of the operational condition of a network. A real time analysis of good and bad frames received is used to determine if the network is healthy or problems exist that may be affecting performance.

Stress test generates traffic and measures performance metrics, in accordance with RFC 2544.



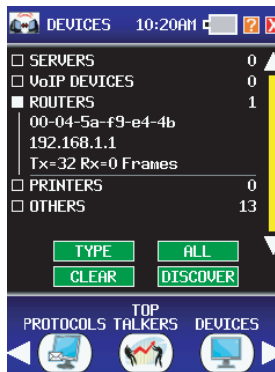
Lists all protocols detected with the total number of packets and the percentage of the total traffic. Certain protocols such as IPv4 and IPv6 can be expanded to show the sub-protocols.

Single or Dual Port Loopback Test with Selectable Frame Size, Bandwidth Percentage and Test Duration. Shows Packet Loss and Round Trip Time for Testing of Network Devices or Segments.



Capture up to 10,000 packets for analysis including packet size, source and destination IP address, time detected and packet type. User defined filters capture specific data needed to identify problems and monitor performance.

Devices are listed by device type, MAC or IP address. Devices are detected by monitoring traffic or through a discover broadcast.



Specifications

Physical **L** **W** **H**
 Dimensions: 16.5 x 10.0 x 6.8 cm
 (6.50 x 3.95 x 2.70 in)
Weight: 612.7 g (21.6 oz)

Power

Li-ion Battery Pack and AC Adapter

Environment

Operating Temperature 0 to 45 C (32° to 113° F)
 Storage Temperature -10 to 60 C (14° to 140° F)

Display

Color LCD Touchscreen Display (320 x 240 x RGB)

Network Types

1.25Gb Single Mode or Multimode Fiber
 10/100/1000baseT

Connector Types

LC Connectors with included Single mode or Multimode SFP Modules and RJ-45 with 10/100/1000baseT SFP
 USB A & USB B Connectors
 AC adapter Power/Battery Charging

Product Design and Specifications subject to change without notice.

Ordering Information

LanExpert Series Feature Comparison

	10/100/1000BaseT	Single Multimode Fiber	Network Analysis	RFC2544 Test	Loopback Test	Cable Test	Optical Power	PoE Test	Inline Testing	VoIP Testing	Packet Capture	Traffic Generator
LE80	✓	✓	✓	✓	✓		✓	✓	✓	✓	✓	✓
LE85	✓	✓	✓	✓		✓		✓	✓	✓	✓	✓

Expert help from the Fiber to the Packet.

